

OKLAHOMA DEPARTMENT OF TRANSPORTATION					
FED. ROAD DIST. NO.	STATE	JOB PIECE NO.	FISCAL YEAR	SHEET NO.	TOTAL SHEETS
	OKLA.				
DESCRIPTION			REVISIONS	DATE	

NOTE:
ALL REFERENCE POINTS ARE 1/2" IRON PINS UNLESS OTHERWISE NOTED ON SURVEY.

NW CORNER - ODOT Sta. No. W-75-797 - FOUND 1/2" IRON PIN. AS SHOWN ON OCCR PREPARED BY RANDY WAYNE MOSLEY FOR NORTH FORK SURVEYING & DRAFTING, FILED ON 03/15/1990. (NO REFERENCES WERE FOUND. SET NEW REFERENCES).

NORTH 1/4 CORNER - ODOT Sta. No. W-75-798 - SET MAG NAIL WITH TAG No. CA3949 AS SHOWN ON PLANS FOR "FEDERAL AID SECONDARY PROJECT No. S-413(3) (S.H.) PART-1 & PART-2, STATE HIGHWAY No. 44, KIOWA & WASHITA COUNTIES DATED 03-31-1950.

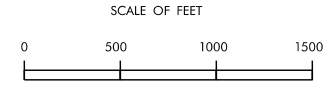
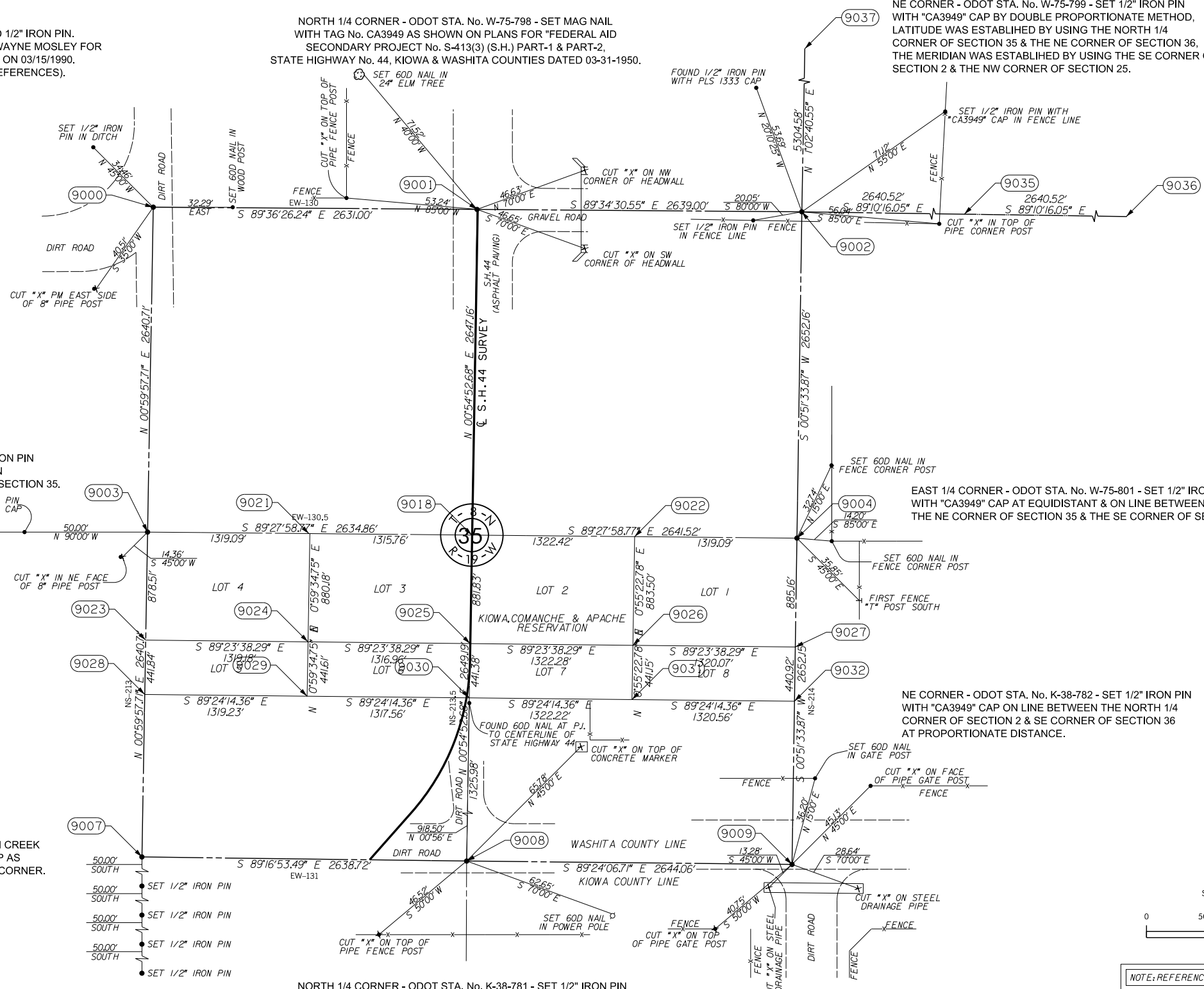
NE CORNER - ODOT Sta. No. W-75-799 - SET 1/2" IRON PIN WITH "CA3949" CAP BY DOUBLE PROPORTIONATE METHOD, LATITUDE WAS ESTABLISHED BY USING THE NORTH 1/4 CORNER OF SECTION 35 & THE NE CORNER OF SECTION 36, THE MERIDIAN WAS ESTABLISHED BY USING THE SE CORNER OF SECTION 2 & THE NW CORNER OF SECTION 25.

WEST 1/4 CORNER - ODOT Sta. No. W-75-800 - SET 1/2" IRON PIN WITH "CA3949" CAP AT EQUIDISTANT & ON LINE BETWEEN THE NW CORNER OF SECTION 35 & THE SW CORNER OF SECTION 35.


EAST 1/4 CORNER - ODOT Sta. No. W-75-801 - SET 1/2" IRON PIN WITH "CA3949" CAP AT EQUIDISTANT & ON LINE BETWEEN THE NE CORNER OF SECTION 35 & THE SE CORNER OF SECTION 35.

SW CORNER - ODOT Sta. No. K-38-780 - CORNER FALLS IN CREEK (CORNER NOT SET) SET 1/2" IRON PIN WITH "CA3949" CAP AS A REFERENCE POINT BEING 50.00 FEET SOUTH OF SAID CORNER.

NORTH 1/4 CORNER - ODOT Sta. No. K-38-781 - SET 1/2" IRON PIN WITH "CA3949" CAP AS SHOWN ON PLANS FOR "FEDERAL AID SECONDARY PROJECT No. S-413(3) (S.H.) PART-1 & PART-2, STATE HIGHWAY No. 44, KIOWA & WASHITA COUNTIES DATED 03-31-1950



NOTE: REFERENCE'S SHOWN ARE NOT TO SCALE.

PLS	CRS	12/12	OKLAHOMA DEPARTMENT OF TRANSPORTATION SURVEY DIVISION  SMITH ROBERTS BALDSCHWILER, LLC 100 N.E. 5th Street Oklahoma City, OK 73104 Telephone: (405) 840-7094 Fax: (405) 840-5916
DRAWN	TDL	12/12	
CHECKED	JAC	12/12	
APPROVED	CRS	12/12	
CREW	BC, SG, BH	SWO 4836 (1)	